

7 KEYS TO CITIZENSHIP - HELP/SUPPORT



Summary

Help/Support: Personal assistance is an absolute priority. At present, it is not sufficiently available, especially in rural areas and for Deaf people. The discussion also addressed the role of a trusted person and supported decision-making. For Deaf people, a 24/7 interpreting call centre and better sign language education would help.

The roundtable discussion was facilitated by and the conclusions were written up by:

Pavol Jablonický

Silvia Holovec Daniová

Key findings from the roundtable:

Personal assistance is an absolute priority for people with disabilities. It has been an important achievement that this mechanism exists and that income from personal assistance is not taxed.

Even so, access to it remains insufficient, especially in rural and remote areas, and particularly for people with hearing impairments, where there is a lack of assistants who know sign language. This also points to the need for a continuous interpreting call centre and much stronger support for sign language teaching and interpreter training. A key challenge is to increase the overall availability of personal assistance, including practical support.

The issue of deprivation and restoration of legal capacity also strongly resonated in the discussion. Deprivation of legal capacity often happens too easily, frequently under the pretext of protection by the family. By contrast, restoring legal capacity is lengthy, administratively demanding, and courts do not always respond openly.

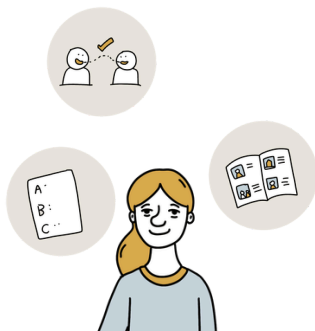
A source of hope is the planned amendment to the law, which is intended to tighten the conditions for depriving a person of legal capacity and to introduce the institution of a trusted person and supported decision-making, so that deprivation of legal capacity remains truly a last resort.

Across the discussions, the need for a broader change in society's overall mindset was repeated. People with disabilities want to live in an environment where they feel safe, accepted, and respected as they are. Politicians bear an important responsibility here – they are expected to communicate decently, respectfully, and empathetically, because their behaviour sets the tone for society as a whole.

Brief summary in Easy-to-Read language (ETR)



The most important support is personal assistance. It is often hard to access.



People with disabilities need:

- personal assistance
- interpreting
- better conditions for personal assistants and interpreters
- aids that help them function better in everyday life
- clear and accessible information

Legal capacity is also an important issue. Some people had it restricted or it was completely taken away from them in the past. This often happens too quickly.



Sometimes it is also because of the family. The family is afraid of “wrong decisions” and wants to restrict their relative. Getting back the right to decide is very difficult.

But a change in the law is being prepared.



People with disabilities want to be accepted as they are. They want to be respected and feel safe.



Politicians have a big influence on the mood in society. That is why they should speak respectfully, they must be empathetic (understand other people) and lead by example.