

Welcome to Winchester

We start at 10.00



Agenda

- 9.30 Registration
- 10.00 Simon Duffy & Wendy Perez - Invest in people and communities
- 10.20 Karen Hooper - Commissioning for Citizenship
- 10.40 Vinesh Kumar
- 11.00 Break
- 11.30 Rhys Davies
- 11.50 Chris Watson
- 12.10 Faith Walton & Karyn Kirkpatrick
- 12.30 Lunch
- 1.30 World Café
- 2.35 Panel
- 3.00 Closing Remarks
- Network and then home

INVEST IN PEOPLE & COMMUNITIES

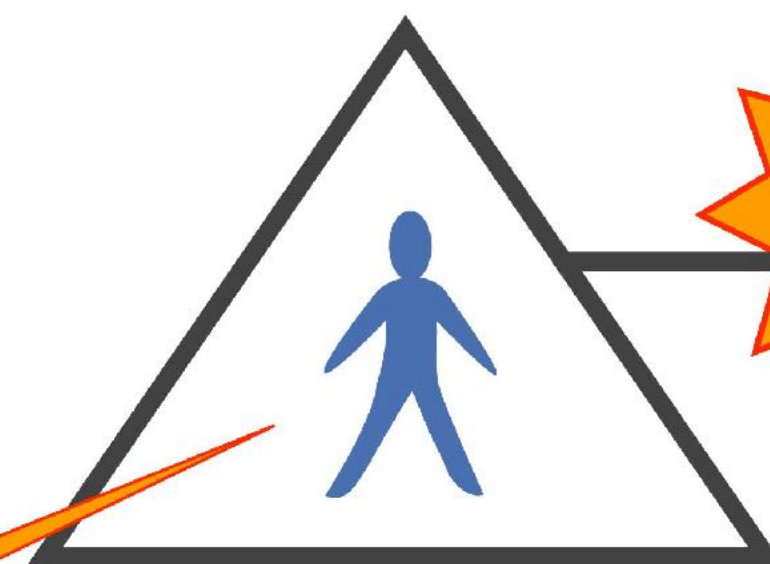
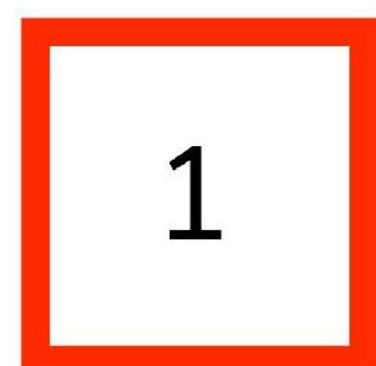
Simon Duffy & Wendy Perez



Isolation

Exclusion

No personalised support
in community



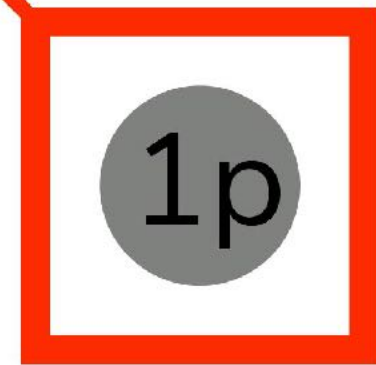
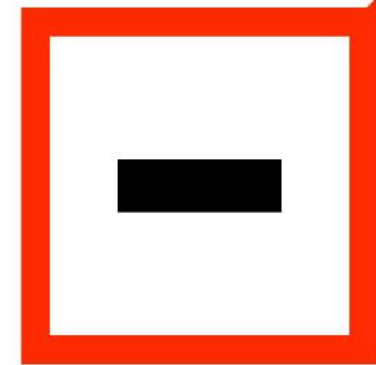
Institutionalisation
as first response

Crisis Point

No effective & early
family support in community



Conflict Points

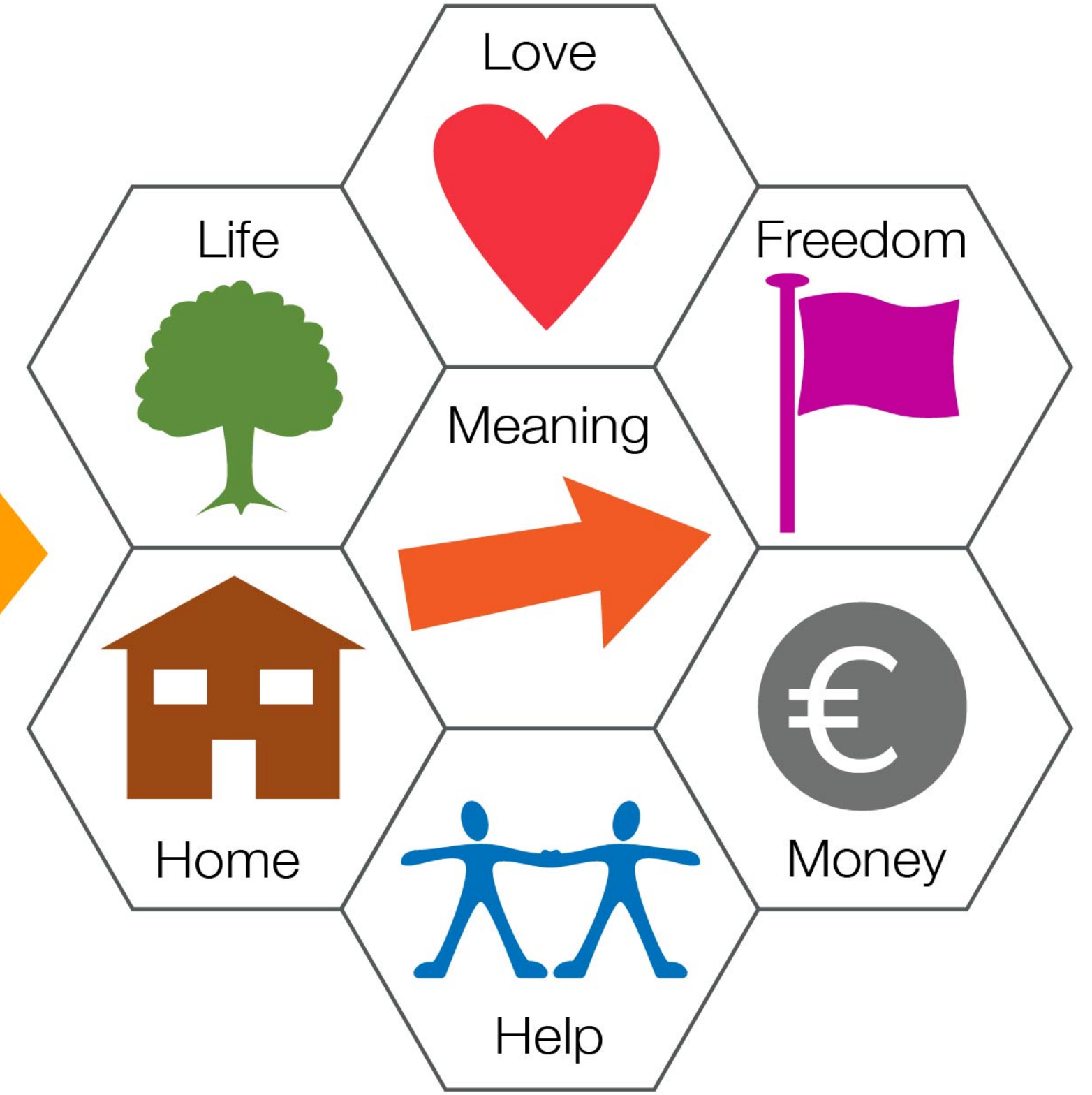
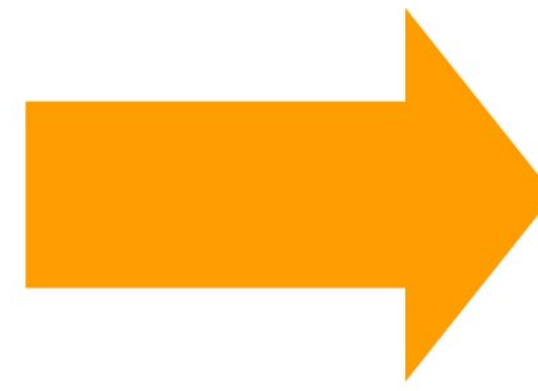
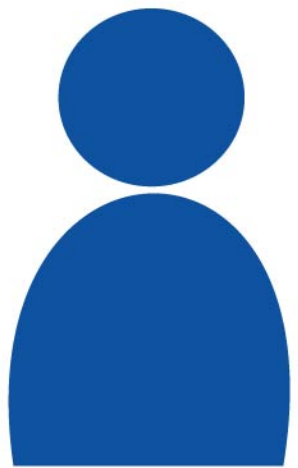
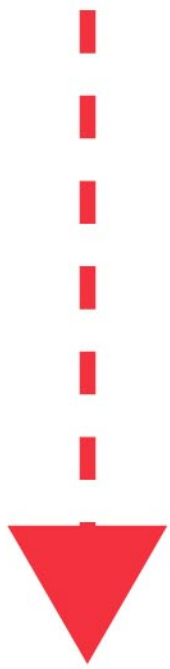
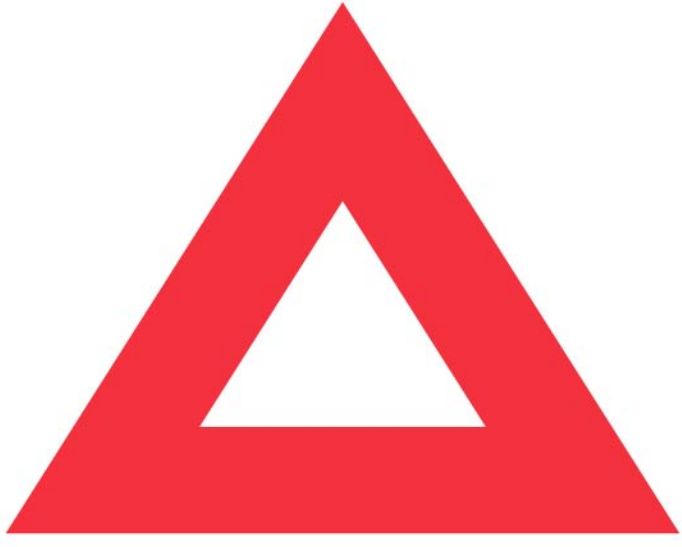


Disadvantage

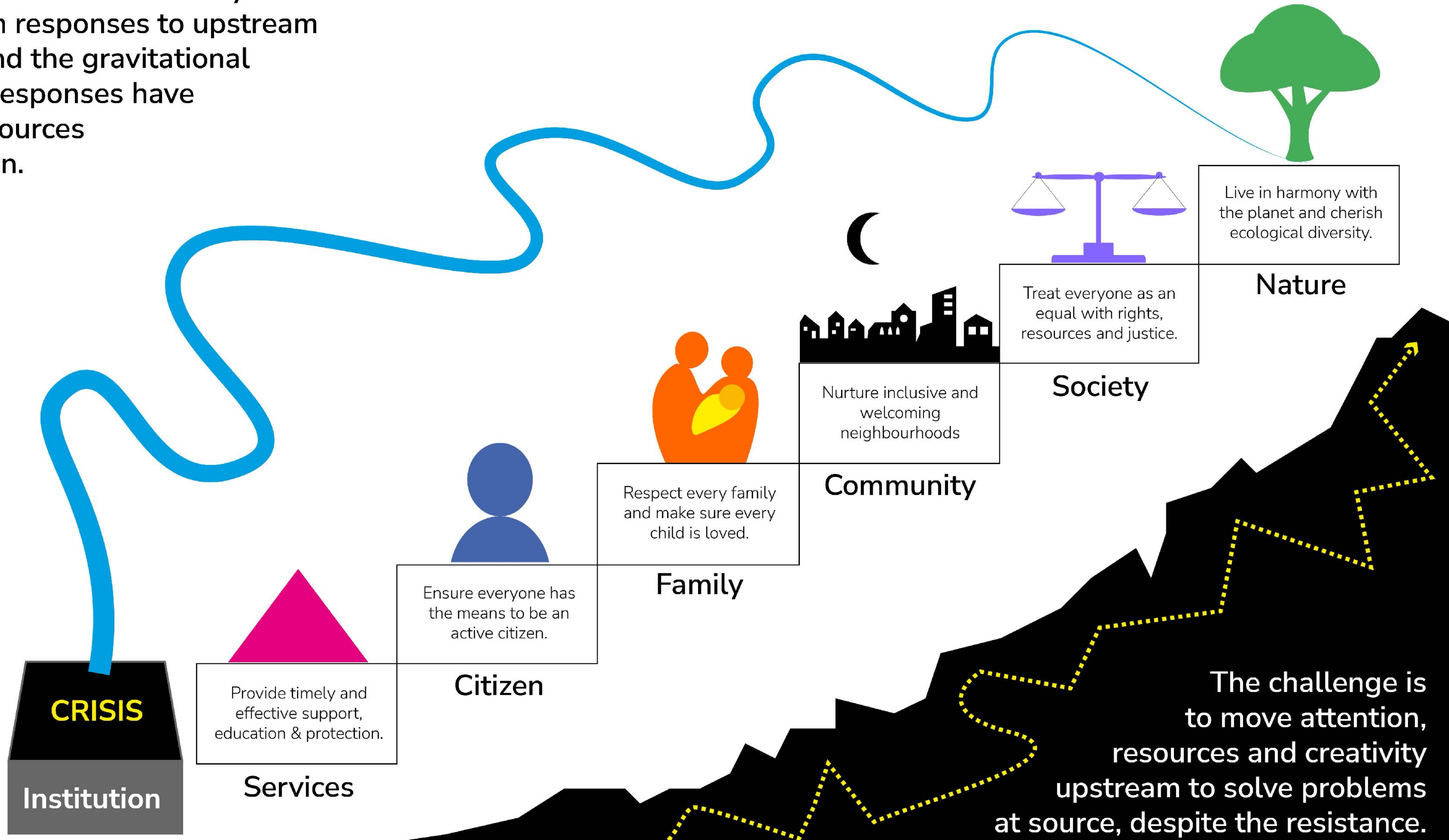
Poverty

Increased
Institutionalisation





The problem is the inefficiency of our downstream responses to upstream problems and the gravitational hold those responses have over our resources and attention.





**Neighbourhoods are the
topsoil for citizenship**



£4 billion of social care (8%) is lost to profit and debt



More than £36 billion of social care (77%) is spent on services outside your neighbourhood

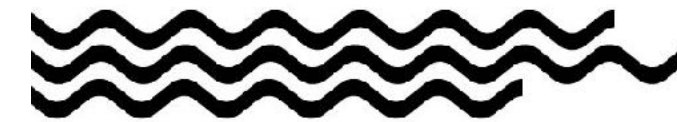
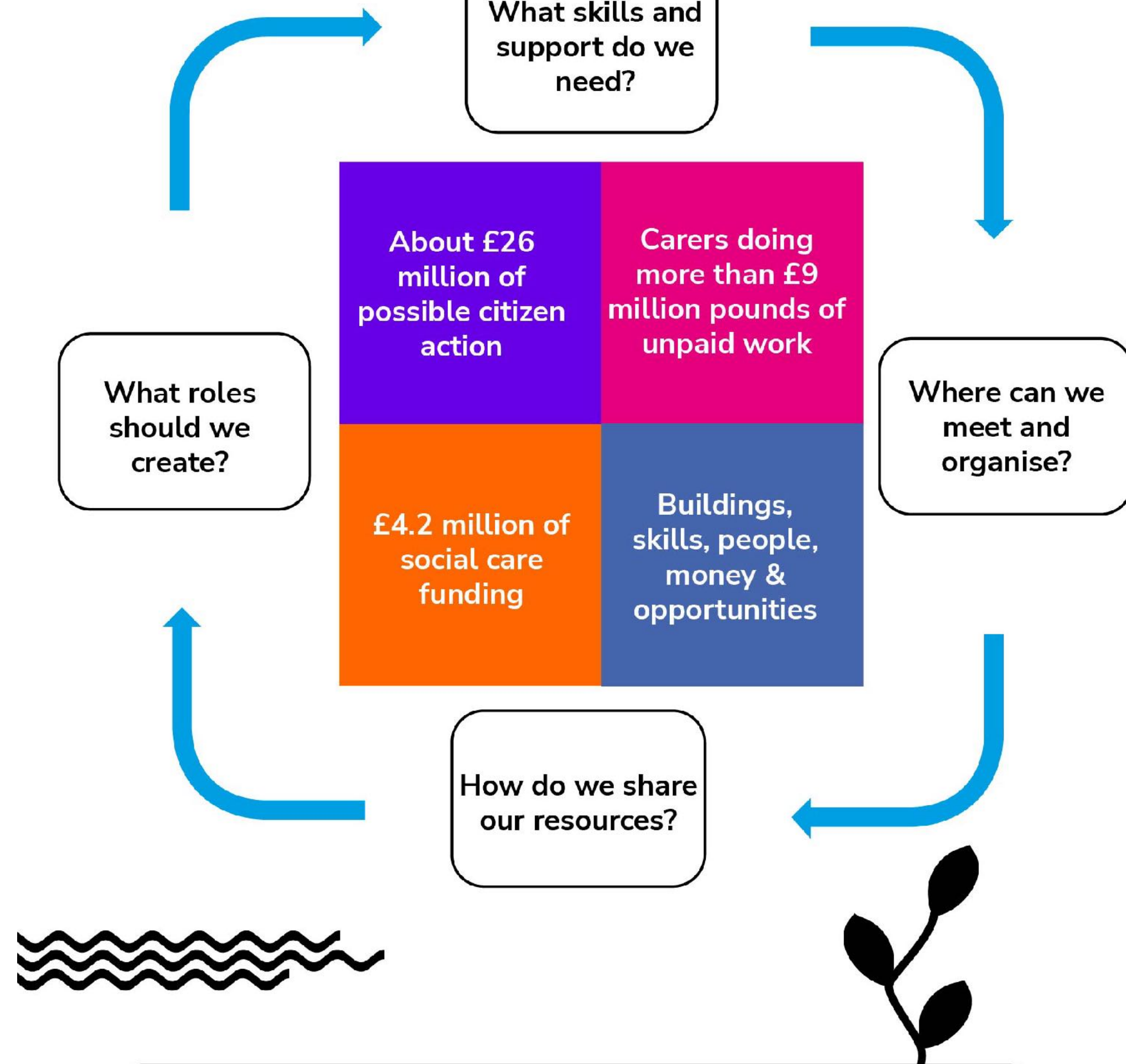
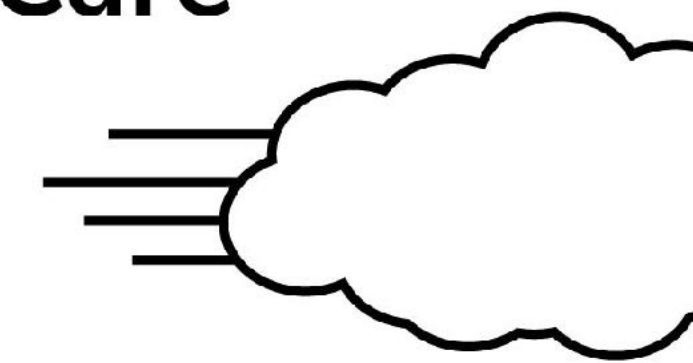
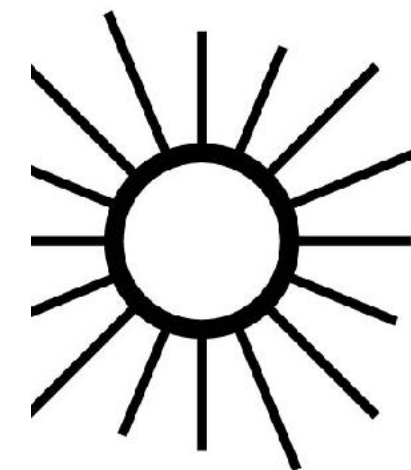


Less than £7 billion of social care (15%) is invested in your neighbourhoods

Supported living
Early intervention
Personal budgets

Data from various sources for England 2022-23 includes £11.5bn of private spending

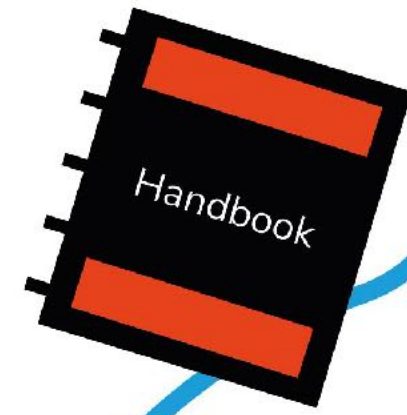
The Ecology of Care



An average neighbourhood of 5,000 people has significant resources, but these are not well used.

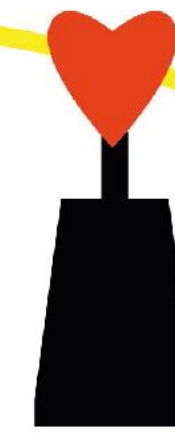
Grow our confidence

- Noticeboards
- Community newsletters
- Maps
- Training & education
- Useful information
- Research & data
- Personal development
- Access to useful networks
- Professional advice
- Mentoring
- Peer support
- Support groups
- Digital connection
- Citizen Advice



Reflect & think

- Churches
- Mosques
- Temples
- Faith groups
- Activist groups



Welcome & connect

- Public Living Rooms
- Bumping Spaces
- Rituals of welcome



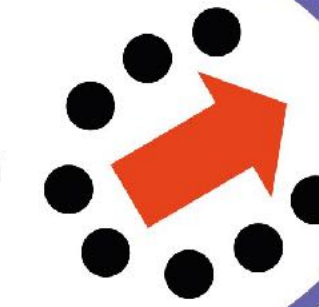
Invent useful roles

- Self-managing team
- Personal assistant
- Support planner
- Peer supporter
- Street leader
- Community Warden
- Community Health Worker
- Neighbourhood team
- Local Area Coordinator
- Community facilitator
- Guerilla gardener
- Project leader



Organise

- Neighbourhood group
- Anchor organisation
- Community association
- Parish council
- Community assembly



Welcome

Share what we have

- Personal budgets
- Neighbourhood funds
- Small Sparks
- Participatory budgeting
- Local bank
- Community tool shed
- Toy banks
- Community meals
- Crowdsourced solutions
- Voluntary taxes
- Sharing food and clothes
- Farmers markets



Celebrate together

- Street parties
- Festivals
- Art Shows
- Parties
- Concerts



Create space to grow

- Wellness centre
- Care blocks
- School
- Community hub
- Church halls
- Safe space
- Local shops
- Restaurants & pubs
- Youth club
- Playing field & playground
- Warm place
- Workstation
- Community Benefit Society
- Community gardens & parks
- Local support provider
- Death café

