

# Integrated Care Systems

The NHS, services and people working together





Our health is affected by many things – housing, unemployment, financial stress, domestic abuse, poverty and lifestyle choices.



This is something that needed to be addressed through partnerships between the NHS, local government and the voluntary sector.



So the Government have made changes to the way the NHS works.



These changes became law on the 1st July 2022.



This new law is called the Health and Care Act 2022.



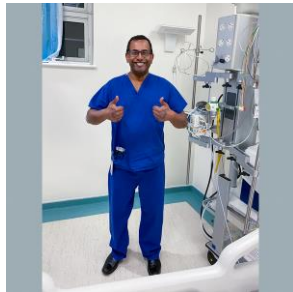
It is important for people to know about these changes if they want to get involved with health and care provision in their local area, for themselves and others.



In England, a lot of money is spent on the NHS every year.



It needs good planning to spend the money well.



This is to make sure everyone gets the best healthcare.



When people are ill or need support, it can be confusing as there are lots of organisations that can help.



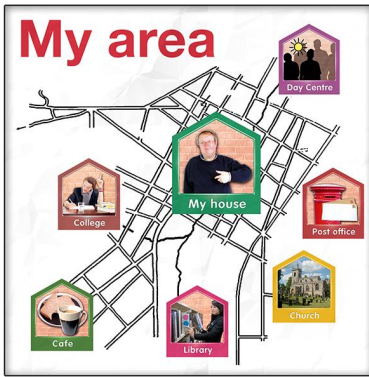
Prior to July 2022 health services, such as GP practices and hospitals, and care services were all run by separate organisations,



This meant many people could fall between the cracks and miss out on the help and care they needed.



The Government want different services such as social care and voluntary services to work together and co-operate with each other more so it's easier to get the services people need.



They also want the planning of health services to be done near people, by people who know the local area well.



This will make it easier for people to get the right care at the right time from the right people.



Mental health services (that help with peoples thoughts and feelings) and physical health services (that help with peoples body) will work together more to help them get the right support.



Local doctors, pharmacies and hospitals will work together more.

They will share ideas to make sure people get all the care and treatment they need at the right time.



They will also work with people, their family or anyone else who supports them.



Integrated Care Systems will bring together providers and commissioners of NHS services across a particular region.



When all these organisations work together it is called an Integrated Care System or ICS.



From July 2022 all 42 ICSs across England became operational as statutory bodies.





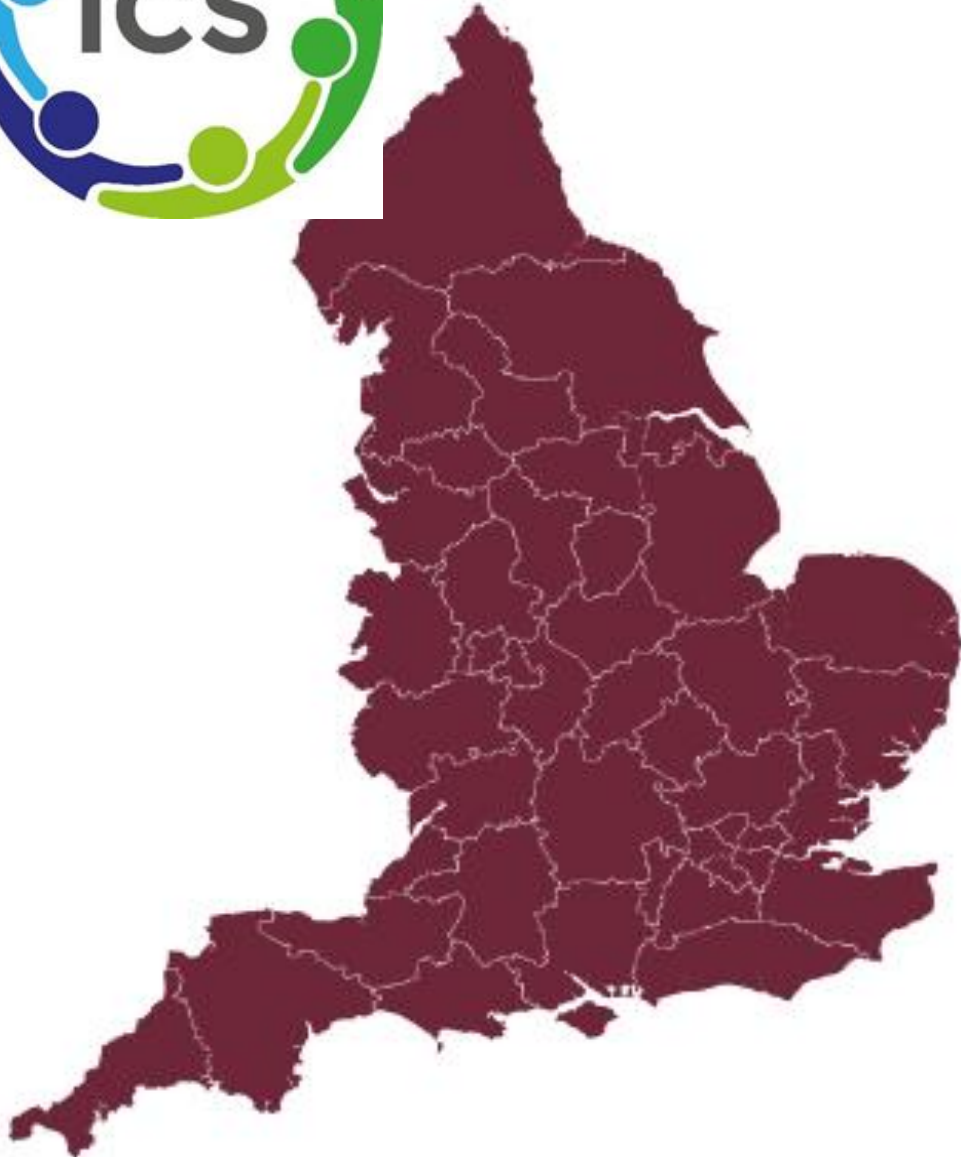
Integrated care systems (ICSs) share resources (like money) to make sure that people can get the care and support they need.



Integrated care systems (ICSs) are about planning health and care services based on what people need where they live.



Each ICS will be different depending on the needs of the people in each area.



- This map shows the location and boundaries of the 42 Integrated Care Systems in England.
- Integrated Care Systems will bring together providers and commissioners of NHS services across a particular region.

# The core purpose of an Integrated Care System is to:



- improve outcomes in population health and healthcare
- tackle inequalities in outcomes, experience and access
- enhance productivity and value for money
- help the NHS support broader social and economic development.



# Each Integrated Care system will be expected to



Make decisions closer to where people live, and by talking with the communities they affect to make sure people get better outcomes.



Work together with partners (Co-production) to address health inequalities and to build joined-up, efficient and effective services

# Each Integrated Care System will -



- help people in that area live longer, happier lives



- make sure everyone gets good mental and physical healthcare and support so that it's fair for everyone



- help everyone get the right support close to home

# These groups will work together more



- Organisations or services run or paid for by the NHS
- Voluntary and community organisations (also known as VCSE – Voluntary Community and Social Enterprise groups)
- The council (Local Authorities)
- Other social care services such as those who provide supported living

# Who will oversee the Integrated Care System?



**NHS England** will monitor the performance of and support the NHS bodies with and through the ICS



The **Care Quality Commission** will independently review and rate each ICS

# How will the Integrated Care System support people?



They should have a learning disability and an autism champion who will support people with a learning disability and autistic people.

They may have link workers (sometimes known as Social Prescribers) that can help with practical things like being lonely.



They will help point people in the direction of community based activities and groups in their local area.



# Where will decisions be made?



The integrated care system is made up of two key bodies: an Integrated Care Board (ICB) and an Integrated Care Partnership (ICP)



We no longer have Clinical Commissioning Groups (CCGs) who used to be in charge of where the money was spent.



Instead, those decisions are made by the Integrated Care Board (ICB).

# Who will be on the Integrated Care Board?



People from the NHS and the local council who will look after the budget and make decisions about health services in their local area.

They will make sure the services they support match the ideas put forward by the people on the partnership.



They will have an Independent Chair, Non-Executive directors, members selected by the NHS trusts and foundation trusts, local authorities and general practice

# Who will be in the Integrated Care Partnership?

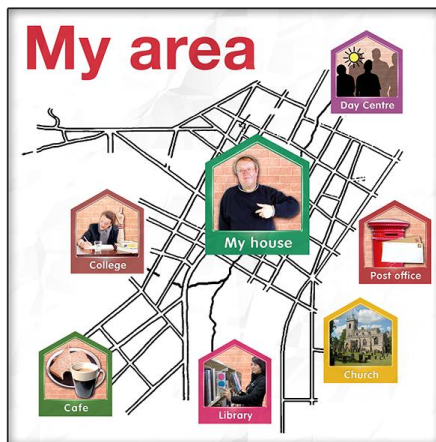


A group of people from the different health and care organisations from across the wider area.

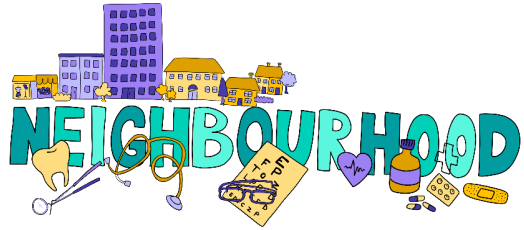
This could include people from local authorities, Integrated Care Boards, Healthwatch and other partners

They will discuss the big issues affecting the health of people and come up with ways to improve health and care in their area.

They aren't responsible for commissioning services.



# How will the Integrated Care System be organised?



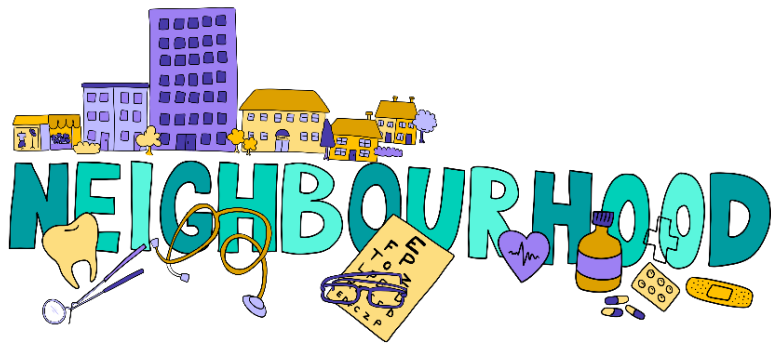
- Neighbourhood level



- Place level



- System level



**This is the first and smallest level of the new system, which covers around 30,000 to 50,000 people.**



At neighbourhood level, this is where GPs, opticians, dentists and community pharmacies will work together to deliver primary care.

They will all work together in a small local area, to form a primary care network.

All doctors and primary care professionals will be part of one of these networks now.

It means they can share resources to better help patients locally.





**This is where most of the service changes will happen and covers around 250,000 to 500,000 people.**



This is a wider area and a place will include several neighbourhoods.

This is where most health and care services will be delivered, including hospital care.



There will be place-based partnerships, where local hospitals, care providers, local councils, doctors and the voluntary sector can come together to discuss key health and care issues in their place.



**This is where most of the service changes will happen and covers around 250,000 to 500,000 people.**



There will be a Health and Wellbeing Board which can also operate at system level.

The Health and Wellbeing Board would have members from the Integrated care system (ICS), Healthwatch, Local Authorities, and wider membership as appropriate.



If there are existing partnerships, these will continue, and new ones will be developed if needed.



**This is the largest level where the budget is held and decisions will be made. It covers around 1 million to 3 million people.**

This is where the integrated care system sits. They are responsible for running all the services, and are made up of the two key bodies:



### **The Integrated Care Partnership**

The committee made up of people from different health and care organisations across the wider system area. They discuss big issues affecting the health of people and come up with ways to improve health and care in their area.

### **The Integrated Care Board**

The organisation made up of people from the NHS and the local council. Responsible for the budget and making decisions about health services in their system area. Making sure the services match the ideas put forward by the partnership.





# How will health and care work together?



The biggest change this new way of working will bring is that the NHS and local councils – which deliver many care services – will be working together as part of the new organisation.



When the NHS was set up in the 1940s its aim was to treat symptoms, but it has come a long way since then, supporting people to live healthier lives.



This change is continuing along that journey and aims to make social care and health even more aligned.

# What role do councils play in healthy populations?



- It's important to note that in many areas, the NHS and councils already work well in partnership at a local level and have done for many years.



- Many councils have very well-established partnerships with health services.
- For example, every location already has established health and wellbeing boards and health overview and scrutiny committees.



- These statutory bodies, run by councils, will continue to exist within the new ICS structure and work jointly within the new approach

# How the Citizenship team work fits with the Integrated Care System (ICS)



- The Integrated Care System (ICS) will bring organisations together to improve what happens for peoples health and healthcare.

- They want to make things fairer for people so the result of their care and how it feels is better.

- When the citizenship team find out how people feel about being a citizen they will share that information with the Integrated Care System (ICS).





- By sharing with the Integrated Care System (ICS) what people have said they can better plan how they provide services to make sure people get what they need in a helpful way.

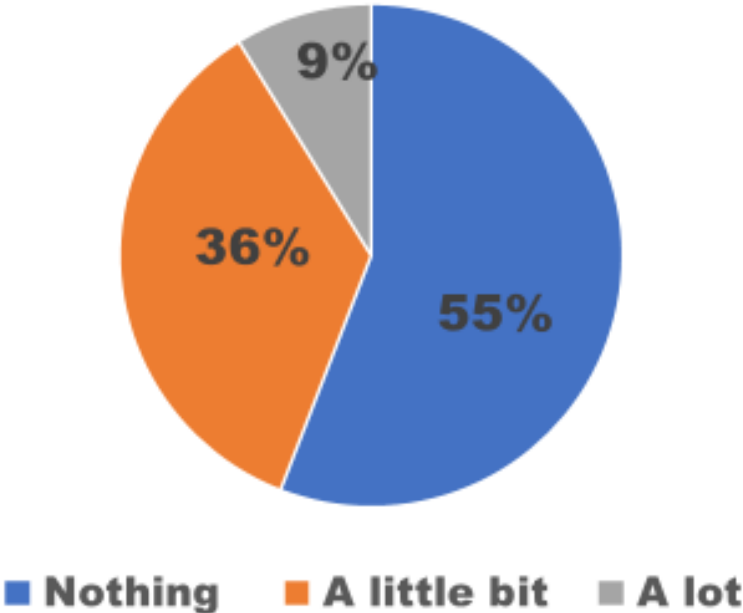


- We want to help social care staff understand what citizenship is and how it affects the people they work with.
- We want to bring people together and make thinking about citizenship fun and are currently doing some thinking around a 7 keys challenge.

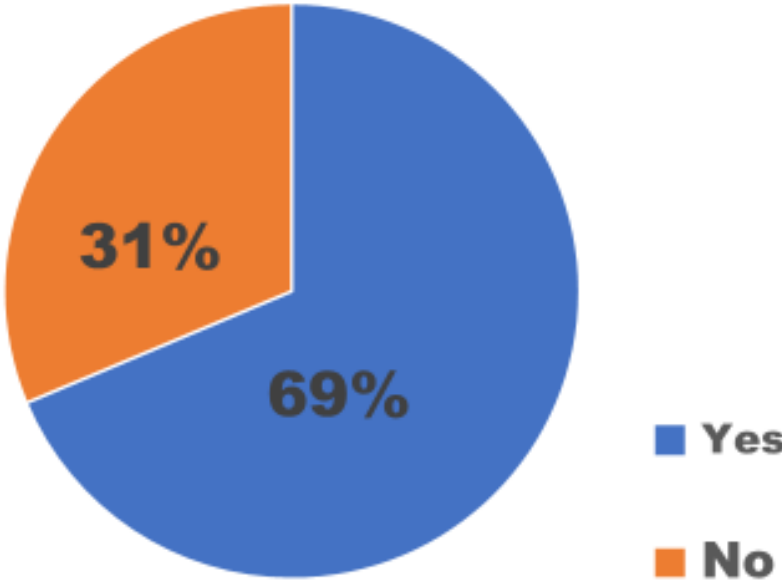
In July 2022 the Citizenship team did some research and found out that from the 68 people that replied most people still didn't know that much about the Integrated Care System (ICS)

## Results - Integrated Care System

What do you know about the ICS



Would you like to know more about the ICS?



**Any questions?**

